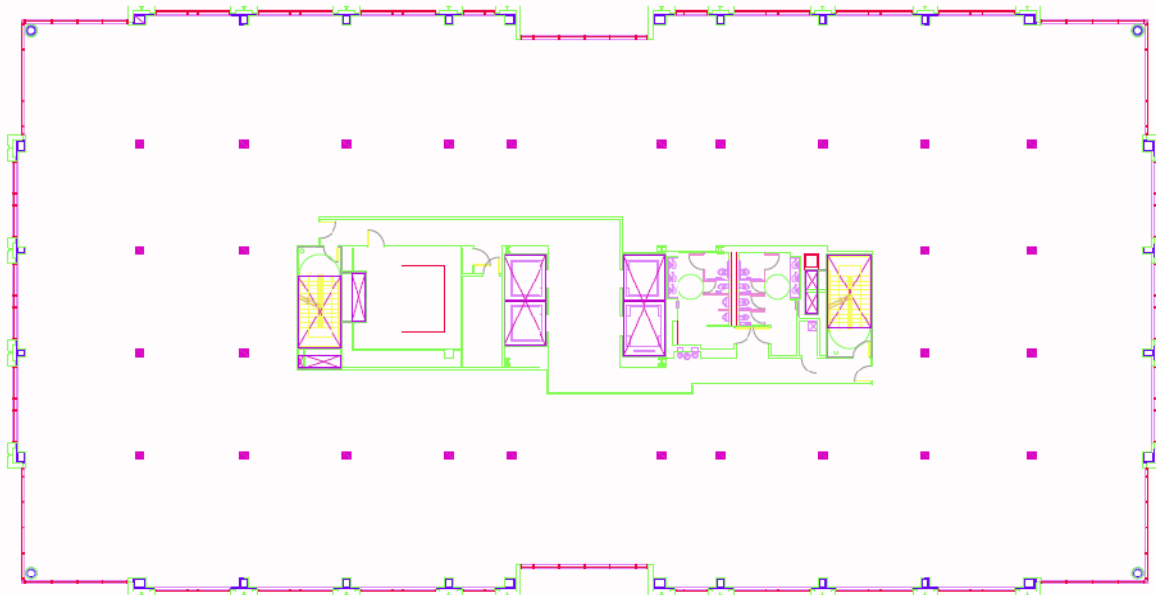


## Architectural Breadth

---

### *Introduction*

To round out the scope of the structural redesign, the impact that the new system will have on the architectural aspects of the building need to be considered. Maintaining the feel and experience of the building needs to be high on the priority list. The main architectural aspect that will be affected by the new concrete design will be the additional columns required for the floor system. These columns are located down the center of the outer two bays of the original framing system. This places them directly in the center of the leasable spaces. Refer to the figure below for the locations of these columns.

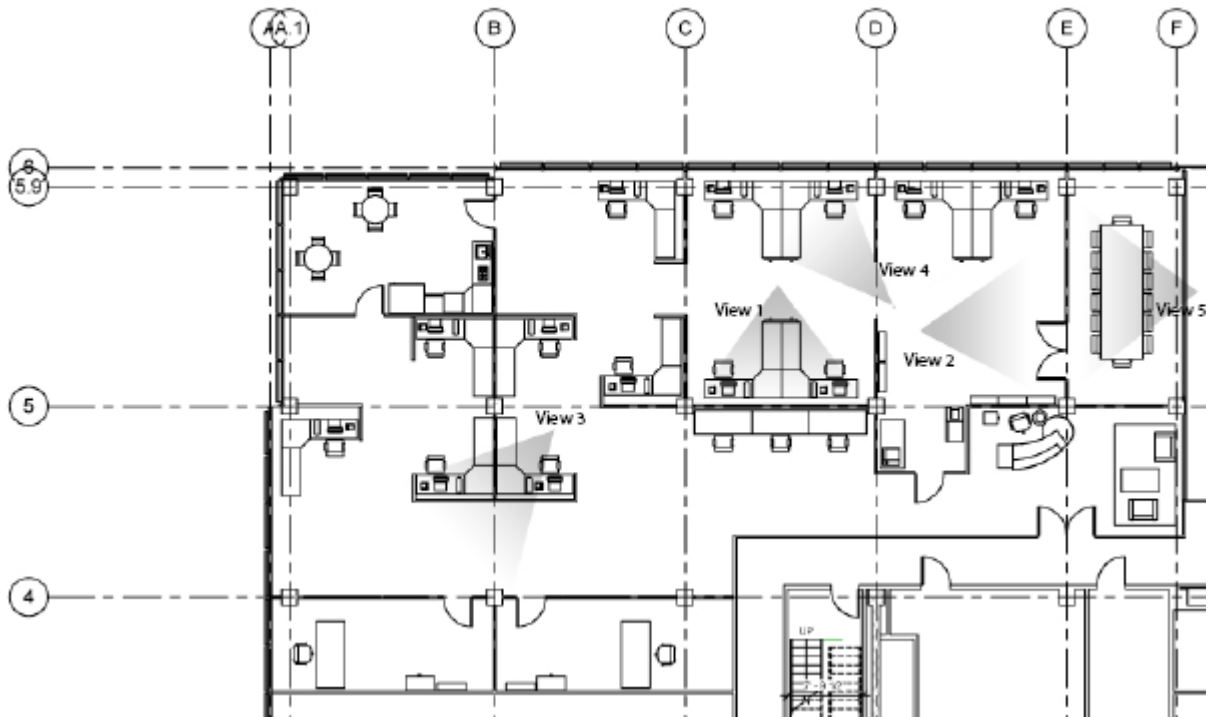


Even though these columns are not ideally located architecturally, they allow for a functional leasable space. To help visually show this, a Revit Architecture model was created to show a possible office layout.

The goals for the office design were to create an environment that was visually pleasing and would be comfortable for its occupants. An office space that is comfortable needs to feel open and uncluttered, with as much natural sunlight as possible. This was achieved through the use of low partitions which served to give a sense of separation to the space, but also allowed for an open feel and light to flow through the office.

The office is entered through large glass double doors opening from the elevator lobby. The receptionist desk is at the front facing the doors, and a seating area is provided off to the right. The waiting area looks through a glass wall and down into the atrium coming up from the

ground floor. A hallway leads back to the main office area. Three small work stations are passed immediately on the right. There are two individual offices provided for the principles or management of the firm. The lunch room is in the corner of the space with entrances from two sides. The conference room is located in the corner opposite the lunch room, and has a large glass wall that looks down into the atrium. Sixteen workstations are provided with generous desk space and file cabinets for storage. The figure below shows a plan view of the office space. Also shown on the plan are the location of the perspectives that appear on the following pages.



The 20' x 20' bays that are provided by the concrete structure allow for ample space for workstations, and hallways. Using a minimal amount of partitions within the space was a made a big priority. In fact, the only full height partitions used in the space are behind the receptionist, around the printing station, and to separate the more private spaces such as the conference room, offices, and break room.

**View 1: Typical Workstations**

This image shows two of the typical work stations found in the office space. The half height partitions behind the desks lend themselves to the openness of the workspace and also provide natural sunlight to the hallway behind. This particular image shows how the concrete structural system still allows for an open feeling plan. At either end of each workstation there is a concrete column. The distance between them is 20', but yet there is plenty of room for the workstations, storage and desk space. The lack of a partition between the two spaces encourages cooperation, collaboration, and helps to foster a team atmosphere.

**View 2: Conference Room Entrance**

The view about is taken looking at the entrance into the conference room. The book shelving along the wall provide storage for office materials or resources that is located right by the printers, copiers and fax machines. Also note how the space directly in front of the conference room was intentionally left open to allow for people to continue their discussions as they flow from the room.

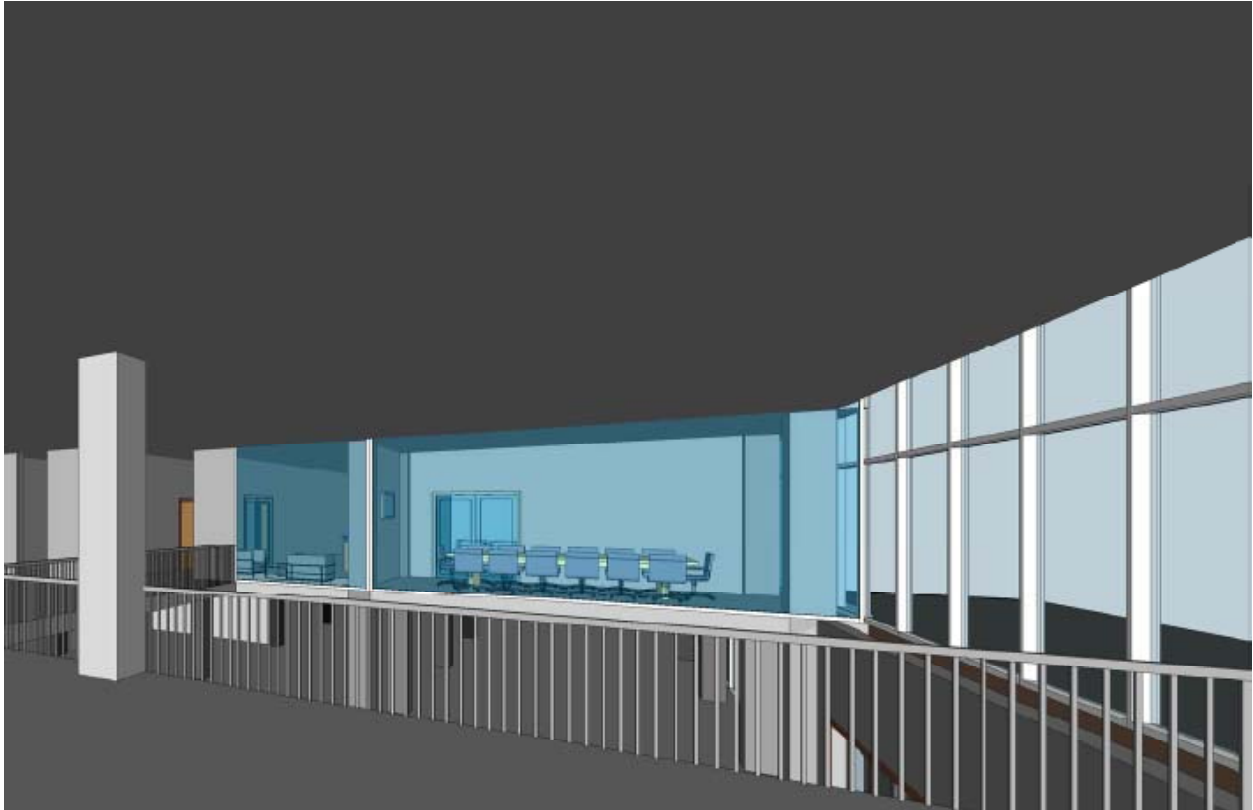
**View 3: Typical Workstations and Private Offices**

The image above shows two more work stations that are located in front of the break room. It also shows the entrance into one of the two private offices. Windows into the private office are provided so that it doesn't feel like a closed in box. Note again how open the space looks with the concrete columns and half heighted partitions between the work stations.

**View 4: Typical Workstations by the Windows**



These two workstations are some of the most desirable in the office. They are located directly in front of the large expansive glass curtain wall. The curtain wall offers a communion with the outside world and provides plenty of natural sunlight. The wooded grove that surrounds the building is clearly visible from these stations.

**View 5: View looking across the atrium into the conference room**

Here the outer glass wall of the conference room can be seen. This provides a unique interaction between the space and the other side area. It provides the conference room with a view looking down through the atrium and into the lobby below, while the atrium provides space between the conference room and the other floor areas and gives privacy to the meeting that is going on inside.